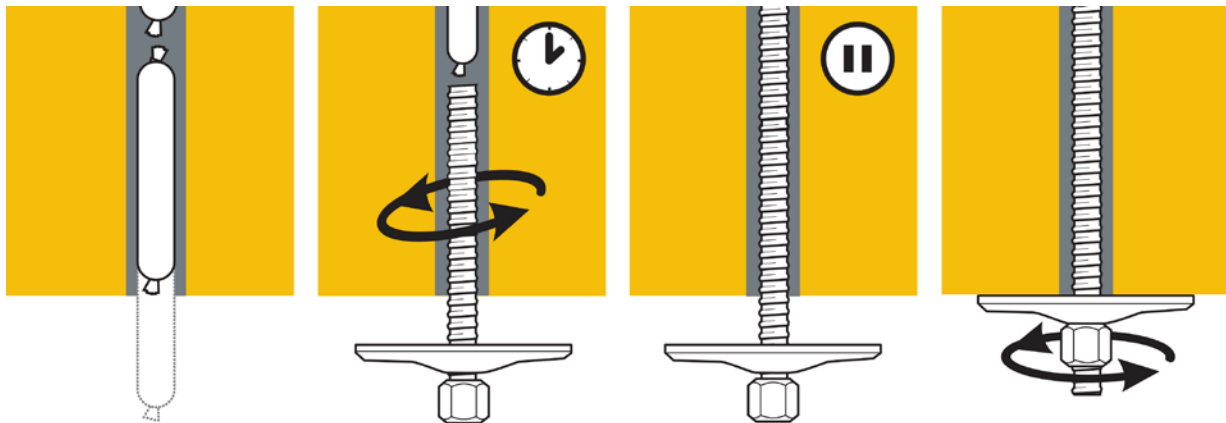


Lokset[®] Resin Installation Guide

Before insertion of Lokset capsule

1. Drill bolt hole to correct length and diameter for selected bolt and resin capsule used. (Contact Minova representative for further advice if required)
2. Ensure bolt hole is free from dust and grit and preferably flushed with water or air prior to bolt installation.

Rotation direction: Coal - Clockwise / Hard Rock - Anti Clockwise



Spin and Hold

1. Insert capsule into the borehole. If using Two Speedie resin insert Fast speed end first.
2. Push bolt into the borehole and commence bolt rotation and resin mixing, continue rotation until bolt reaches the back of the hole and continue mixing for a further 2-4 seconds then stop rotation. (Ensure correct RPM's and spin times are used. Contact Minova representative for further advice if required).
3. Hold bolt in position until correct hold time for resin capsule has been reached. (Note hold times may vary depending on installation conditions).
4. Spin nut and tension until drill rig stalls and plate is tight to the mine roof.

Spin to Stall

1. Insert capsule into the borehole. If using Two Speedie resin insert Fast speed end first.
2. Push bolt into the borehole and commence bolt rotation and resin mixing, continue rotation until bolt reaches the back of the hole. (Ensure correct RPM's are used. Contact Minova representative for further advice if required.)
3. Skip step 3 in diagram. Continue bolt rotation until nut breaks out and tension until drill rig stalls and plate is tight to the mine roof.

NEW SOUTH WALES

Kurri Kurri
Smithfield
Nowra

QUEENSLAND

Mackay

SOUTH AUSTRALIA

Adelaide

WESTERN AUSTRALIA

Perth

Customer Service:

1800 Minova / 1800 646 682 (free call within Australia)

1300 Minova / 1300 646 682 (local call Australia)

1300 FaxMinova / 1300 329 646