

COAL MINING

COAL BOLT

POINT ANCHORED COAL BOLT

DESCRIPTION

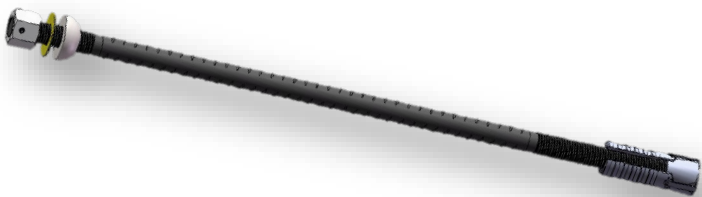
Minova’s Expansion Shell Coal Bolts offer reliable point-anchored support in competent ground conditions. Each bolt features a rolled M24 x 3.0 mm thread and comes fully equipped with an anti-friction washer, dome washer, expansion shell, and 36 mm drive nut.

These bolts are available in standard “S” mild steel with a coil pin configuration, and multiple diameters can be requested. The expansion shells have serrations for enhanced grip and include a protective sleeve to prevent part loss and save time—simply remove the sleeve before use. Additionally, corrosion protection options such as hot dip galvanizing or zinc plating are available.

APPLICATION AND USES

Point Anchored Coal Bolts are designed for roof and rib bolting applications, primarily in coal mining operations. They are recommended for use in 45 mm diameter holes, with a minimum hole depth extension of 50 mm to ensure proper engagement of the expansion shell with the borehole.

Conducting load tests is essential to verify the anchor’s suitability for specific ground conditions.



ADVANTAGES

- Point anchored bolt used in roof & rib bolting applications.
- Extensive quality-controlled manufacturing
- Parallel contact of the expansion shell leaves in the borehole ensures excellent load transfer.
- Able to achieve 50kN tension in Competent ground.
- Equipped with washers and protective sleeves for quick installation.

TECHNICAL DATA


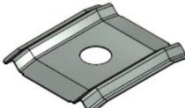
Bar Mechanical Properties

Typical Properties	M24 S Grade
Nominal Rib Height Diameter (mm)	24
Nominal Cross-Sectional Area of the Bar (mm ²)	370
Torque pin rating (Nm)	130-175
Expansion Shell length (mm)	115
Minimum Pre-Tension (kN)	50

Plates

Minova can supply a comprehensive range of plates for use with Coal bolts.

Plates most typically used with Coal bolts are:

Plate Name	Dimensions (mm)	
Crown Plate	150 x 150 x 5	
Strata Plate	280x300x1.8	

PACKAGING AND TRANSPORTATION

Packaged in bundles of 50 with the option to plastic wrap and strap washer, nuts, and threads. Bundles of 60 are also available where required. Individual bolt lengths are visually identifiable by a coloured dome washer on each bolt.

APPROVALS AND CERTIFICATES

Product Standards

	M24 S Grade
Steel Bar	AS/NZS 3679.1-300
Galvanizing	AS4680
Bar Straightness	AS 1442-1991

TECHNICAL SUPPORT

We provide technical advisory service by a team of specialists in the field. The service includes on site assistance and advice on evaluation trials and laboratory work. All technical data sheets can be found on www.minovalglobal.com/apac.

MANUFACTURER

Minova Australia Pty Ltd

An ISO 9001:2015 Quality Management Certificated Company



FS 603747

ADDITIONAL INFORMATION

Minova Australia offers a comprehensive range of products, all of which have been developed after extensive research and testing on a global scale via our international network of operations. These products include:

- Resin anchor systems
- High yield grouts and foams
- Monolithic chock systems
- High performance cable bolt grouts
- Polyurethane resin systems
- Sprayable coatings for ventilation control
- Water stop grouts
- Ventilation formwork systems including: Meshblock and Tecmesh
- Grout mixers and batchers both air and hydraulically operated
- Contract Installations
- Flexible membranes for strata support and waterproofing applications

CUSTOMER SERVICE

Minova Australia Pty Ltd

(1800 Minova) 1800 646 682
(1300 Minova) 1300 646 682
+61 2 4939 5159 (international)

Email: sales_au@minovaglobal.com
Website: www.minovaglobal.com/apac

LEARN MORE

Click on the website links to learn more about Minova and their solutions.

[About Minova](#)
[Lokset Resin Capsules](#)
[Anchoring Grouts](#)
[High Volume Output Grouts](#)
[Injection Chemicals](#)
[Sprayed Cements](#)
[Steel and Fibreglass](#)
[Mesh](#)
[Ventilation & Air Control](#)
[Surface to Seam](#)
[UniPass Bolting Technologies](#)
[Pre-Driven Recovery Roadway](#)
[Optimised Ore Recovery](#)

DISCLAIMER

All information contained in this document is provided for informational purposes only and is subject to change without notice. Since Minova cannot anticipate or control the conditions under which this information and its products may be used, each user should review the information in the specific context of the intended application. To the maximum extent permitted by law, Minova specifically disclaims all warranties express or implied in law, including accuracy, non-infringement, and implied warranties of merchantability or fitness for a particular purpose. Minova specifically disclaims, and will not be responsible for, any liability or damages resulting from the use or reliance upon the information in this document.

The Minova Logo is a registered trademark.

© Minova Australia Pty Ltd

® Registered trademark of Minova International Limited